



ADVOCATING FOR BUSINESS. STRENGTHENING NEW MEXICO.

MEMBERSHIP GUIDE

nmchamber.org
info@nmchamber.org
505.842.0644

MEET THE CHAMBER TEAM

The People Powering Progress Across New Mexico

At the Chamber, our strength lies in our people. This dedicated team brings together expertise in policy, communications, operations, and workforce development to serve our members and advance our state's economic future. Together, they embody the Chamber's mission to make New Mexico a leader in industry, innovation, and quality of life.

MEET THE FOUNDATION TEAM

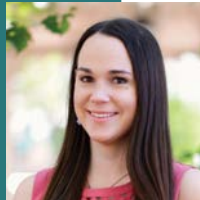
The NMCC Foundation is the education, research, and programming arm of the New Mexico Chamber of Commerce. By utilizing cutting-edge research and employing data-driven solutions, the Foundation endeavors to lift up all New Mexicans by improving our state's economic competitiveness.



LEADERSHIP

Leslie Hielema

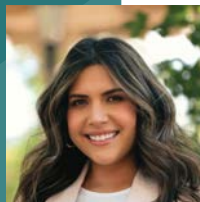
President & CEO



POLICY & ADVOCACY

Alison Riley

Vice President of Government Relations & Policy



PROGRAMS & OPERATIONS

Janae Gardner

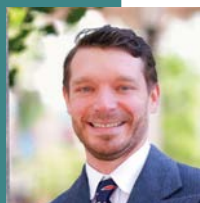
Vice President of Programs & Operations



PROGRAMS & OPERATIONS

Theresa Burch

Administrative & Special Projects Coordinator



LEADERSHIP

Rob Leming

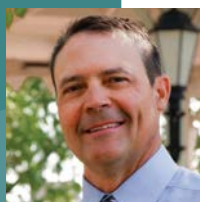
Foundation President & CEO



COMMUNICATIONS

Amythyst Marciano

Director of Marketing & Communications



EDUCATION

Benton Spradlin

Education Program Manager

2025-2026 BOARD OF DIRECTORS

BOARD CHAIR

Matthew Jaramillo
ExxonMobil

FIRST VICE CHAIR

Michael Stordahl
Nusenda

SECOND VICE CHAIR

Kellie Mixon
New Mexico Mutual

SECRETARY

Patrick Killen
Chevron

TREASURER

Tomas Chavez
Sandia Tramway

IMMEDIATE PAST CHAIR

Leean Kravitz
Fidelity Investments

Elijah Baca
Santa Clara Development Corp

Bridget Condon
Swire Coca-Cola

Frank Gallegos
Intel

Kendal Giles
Dekker

Celinda Gonzalez
The Home Depot

David Hawkins
El Paso Electric

Carlos Hernandez
Albertsons

Scott Hutchings
Waste Management

Monique Jacobson
Public Service Company NM

Daisy Lira
Bumble Bee Learning Center

Zoë Lees
Xcel Energy

Carmela Little
Brycon
Brian Miller
Lovelace Health System

Laura Phelps
Freeport-McMoRan

Rene Portillo
Sam's Club

Rodney Prunty
United Way of Central NM

Marquita Russel
New Mexico Finance Authority

Louis Salazar
ConocoPhillips

Janice Torrez
BCBS of New Mexico

Tiffany Wallace
Occidental Petroleum

Gerald Weseen
New Mexico Gas Company

David Williams
Meta

JOIN THE BUSINESS LEADERS SHAPING NEW MEXICO

When You Join the New Mexico Chamber of Commerce, You Become Part of a Powerful Network Driving the Future of Our State.

Membership connects you to the conversations that matter—on policy, infrastructure, workforce, and innovation. You gain direct access to decision makers, increased visibility, and real opportunities to influence New Mexico's business environment.

Whether you want to stay informed, grow your network, or amplify your voice, NMCC gives you the tools and connections to lead with confidence.

What You Gain As a Member

+ INFLUENCE POLICY WHERE IT COUNTS

As a statewide business advocate, NMCC gives you direct access to the legislative and regulatory process. We champion pro-business policies, oppose harmful proposals, and shape an environment where your business can thrive.

+ ACCESS TO DECISION MAKERS

Membership gives you a seat at the table with key policymakers, agency leaders, and public officials ensuring your business priorities are heard when it matters most.

+ EXCLUSIVE INSIGHTS AND BUSINESS INTELLIGENCE

Stay ahead with timely policy intelligence, economic foresight, and actionable analysis so you can stay ahead of change and lead with clarity.

+ ELITE BUSINESS NETWORK AND GROWTH OPPORTUNITIES

Connect with CEOs, senior executives, and innovators through high impact events and programs designed to expand your reach and accelerate success.

Stay informed.
Grow your
network.
Amplify
your voice.



INCREASE YOUR IMPACT WITH NMCC MEMBERSHIP

**I**

Influence

Help shape policy decisions that protect and grow your business across New Mexico.

**M**

Mobilize

Unite with business leaders and decision makers to champion a stronger economy and amplify your voice.

**P**

Position

Put your business at the center of New Mexico's most influential conversations, events, and initiatives.

**A**

Access

Stay ahead with timely insights, exclusive updates, and policy intelligence that empowers your decisions.

**C**

Collaborate

Build strategic partnerships across industries and regions to unlock shared growth and innovation.

**T**

Transform

Grow your leadership, develop your team, and drive initiatives that shape the future of New Mexico.

BECOME A MEMBER

Call 505.842.0644 or visit

business.nmchamber.org/member/newmemberapp



POLICY THAT POWERS PROGRESS

Four Pillars Shaping New Mexico's Economic Future

At the New Mexico Chamber of Commerce, we turn policy into progress. Our advocacy work is anchored in four strategic pillars designed to drive growth, improve quality of life, and strengthen New Mexico's competitiveness.

Bold policy,
real progress—
making New
Mexico a better
place to live and
do business.



CULTIVATING A STABLE AND COMPETITIVE BUSINESS ENVIRONMENT

We advocate for a predictable, supportive climate that gives businesses the confidence to invest, expand, and innovate. By championing policies that promote stability, fairness, and opportunity, we help create the conditions for businesses of all sizes to thrive and strengthen New Mexico's economy.



BUILDING A SKILLED AND THRIVING WORKFORCE

We support policies that expand access to talent, education, and training. Through workforce development, skills programs, and inclusive hiring initiatives, we help ensure businesses have the talent they need and individuals have the opportunity to succeed and contribute.



DRIVING INNOVATION AND ECONOMIC DIVERSIFICATION

We champion emerging industries and technology-driven growth to strengthen and diversify New Mexico's economy. By supporting forward-looking policies, entrepreneurship, and sector investment, we help build a more resilient and opportunity-rich business landscape.



INVESTING IN MODERN INFRASTRUCTURE TO POWER GROWTH

We promote infrastructure investments that connect communities and support long-term growth. By advocating for improvements in transportation, broadband, energy, and water systems, we help lay the foundation for competitiveness and quality of life.

JOIN A POLICY COMMITTEE

NMCC's policy committees are the driving force behind our advocacy where members shape policy positions, influence legislative priorities, and ensure the business voice is heard across all levels of government. Members are encouraged to join any committees that align with their interests or expertise.

+ AGRICULTURE & FOOD PROCESSING

Promote policies that ensure access to land, water, and infrastructure, while supporting environmental stewardship and providing regulatory clarity for business growth.

+ ECONOMIC DEVELOPMENT & TECHNOLOGY

Promote innovation and job growth through strategies that support R&D, technology, and a more diverse economy.

+ EDUCATION & WORKFORCE DEVELOPMENT

Align education and training with business needs to close skill gaps and build an inclusive, work ready talent pipeline.

+ ENERGY & EXTRACTIVE INDUSTRIES

Shape energy policy that supports traditional and renewable sectors, and energy security.

+ ENVIRONMENT, WATER & LAND USE

Addresses business-critical issues including environmental regulation, water rights adjudication, and resource planning, ensuring member voices guided balanced policy outcomes.

+ HEALTHCARE

Advance healthcare policy that improves affordability, expands access, and strengthens the healthcare workforce.

+ TAXATION & REGULATION

Advance tax and regulatory policies that drive investment, support job creation, and strengthen New Mexico's business competitiveness.

OUR POLICY PROCESS: MEMBER-DRIVEN. IMPACT-FOCUSED.

The NMCC policy planning process is a member-driven framework that ensures our legislative priorities reflect the real needs of New Mexico employers. Through open, collaborative committee meetings, members contribute ideas, share expertise, and identify the most pressing issues facing their industries and communities.

These insights are synthesized into a unified Policy Agenda that guides NMCC's advocacy throughout the year giving every member a voice in shaping the future of our state's economy.



1. POLICY COMMITTEES

Policy Committees meet 2 to 4 times a year to identify legislative priorities grounded in business needs. Meetings often feature guest speakers who provide industry insights and legislative outlooks.



2. COMMITTEE CHAIRS

Committee Chairs collaborate to refine and unify recommendations, forming NMCC's official statewide Policy Agenda.



3. STRATEGIC COMMUNICATION

We communicate NMCC's positions to policymakers, the media, and stakeholders across the state to amplify the business voice.



4. LEGISLATIVE ENGAGEMENT

Guided by our Policy Agenda, NMCC leads year-round advocacy efforts. During the legislative session, we're full-time at the Roundhouse, testifying, meeting with lawmakers, and ensuring the business community is heard. Each week, we convene with Chamber policy leaders to fine-tune strategy and adjust tactics. We also stay engaged during interim sessions across New Mexico, helping shape policy before legislation is introduced.

SIGNATURE EVENTS FOR MEMBERS

Stay Connected to the People and Issues Shaping New Mexico

WHERE MEMBERS CONNECT, LEARN, AND LEAD

At the New Mexico Chamber of Commerce, our events go beyond the calendar—they are where business, leadership, and policy meet. From roundtables and briefings to statewide celebrations, we create opportunities for members to stay informed, build influence, and help shape New Mexico's future.

As a member, you gain access to signature events that elevate your visibility, expand your network, and place you at the center of the conversations driving our state forward.

AND MORE

We are always listening to our members and launching new events to meet evolving needs. From emerging industry roundtables to regional policy discussions, our programming continues to grow, offering more ways to connect, lead, and make an impact.



Held each January at the start of the legislative session, Business Day offers members a front row seat to hear directly from the Governor, legislative leaders, and key policymakers. This event helps members engage on policy priorities and connect with decision makers at the state's leading business advocacy gathering.



Our annual FOCUS Awards honor legislative leaders who champion policies that promote economic growth and reflect Chamber priorities. Held in a relaxed, social atmosphere, this evening event gives members the opportunity to celebrate wins, connect with elected officials, and strengthen alliances that carry forward into the next session.



The Annual Membership Meeting brings together business leaders from across New Mexico to review progress, align on goals, and shape future strategy. Members help guide the organization's direction and contribute to the work ahead.



Set against the iconic Albuquerque International Balloon Fiesta, this special gathering brings together Chamber Board Members, policy leaders, legislators, and community partners for a vibrant morning of conversation and connection.

Join the New
Mexico Chamber
of Commerce
and help drive
lasting change
in workforce,
innovation, and
economic growth.

EXTENDING YOUR IMPACT THROUGH THE NMCC FOUNDATION

When you join the New Mexico Chamber of Commerce, you do more than shape policy. You help drive long term change in workforce development, innovation, and statewide economic growth.

The NMCC Foundation advances research, educational initiatives, and strategies that strengthen New Mexico's business climate and talent pipeline. By addressing systemic challenges with data-driven solutions, the Foundation helps build a more competitive economy. Chamber members benefit from these efforts and receive regular updates on the Foundation's impact, which is supported by independent funding and philanthropic contributions.

One standout initiative is Be Pro Be Proud New Mexico, launched in 2023. This mobile workforce program uses immersive, hands-on technology to introduce students to high demand skilled trades, bridging the gap between classroom and career. While NMCC dues do not fund the program directly, members benefit from its growing impact on workforce readiness and public awareness of essential career paths.

As a member, you are part of something bigger, a network of leaders investing in the future of business and building the foundation for a stronger New Mexico.

INVESTOR MEMBERSHIP: MAXIMIZE YOUR VISIBILITY. ELEVATE YOUR BRAND.

Investor Membership is built for organizations that want to be seen and recognized. It's the ideal choice for companies looking to position themselves as leaders in New Mexico's business community and align their brand with statewide influence.

This level is more than membership. It is strategic visibility. Investor Members receive premium recognition across NMCC's platforms, events, and publications, connecting your brand with decision makers, thought leaders, and fellow employers from across the state.

Built for
organizations
that want to
lead, be seen,
and stay top of
mind across
New Mexico's
business
community.

NMCC BENEFITS	AFFILIATE \$1,100 < 50 EMPLOYEES	ASSOCIATE \$2,750 < 150 EMPLOYEES	SUPPORTING \$5,500 < 400 EMPLOYEES	PREMIER \$8,250 < 600 EMPLOYEES	PRINCIPAL \$11,000 < 800 EMPLOYEES	PARTNER \$16,500 ANY EMPLOYEES
Logo & Link Featured on Website	✓	✓	✓	✓	✓	✓
Logo in Annual Focus Report	✓	✓	✓	✓	✓	✓
Introduced As a New Investor on NMCC Social Media	✗	✓	✓	✓	✓	✓
Bi-monthly Board Insights Memo	✗	✗	✓	✓	✓	✓
Priority Seating at Business Day	✗	✗	✗	✓	✓	✓
Dedicated Policy Briefing for Your Company	✗	✗	✗	✗	✓	✓
Co-author Two E-newsletter Articles	✗	✗	✗	✗	✓	✓
One Feature Story on NMCC Social Media	✗	✗	✗	✗	✗	✓
Annual Meeting With CEO/Leadership	✗	✗	✗	✗	✗	✓

BASIC MEMBERSHIP: START STRONG. STAY CONNECTED.

Basic Membership Is the Perfect Entry Point for Businesses That Want to Stay Informed, Support Statewide Advocacy, and Begin Building Meaningful Connections Across New Mexico.

INCLUDED WITH BASIC MEMBERSHIP:

- ✓ Access to NMCC policy committees
- ✓ Member communications and legislative updates
- ✓ Invitation to events and programs

ANNUAL DUES ARE BASED ON THE NUMBER OF FULL-TIME EMPLOYEES:



SMALL

1-3 employees	\$385
4-10 employees	\$440



MID-SIZED

11-25 employees	\$715
26-50 employees	\$990



MEDIUM

51-75 employees	\$1,320
76-100 employees	\$1,650
101-150 employees	\$2,090



LARGE

151-200 employees	\$2,880
201-300 employees	\$3,630
301-400 employees	\$4,950



ENTERPRISE

401-500 employees	\$6,050
501-600 employees	\$7,590
601-700 employees	\$9,680
701-800 employees	\$9,900



CORPORATE CHAMPION

801-900 employees	\$11,000
901-1,000 employees	\$12,100
1,000+ employees	\$13,200

COMMON QUESTIONS ABOUT NMCC MEMBERSHIP

WHAT IS THE NEW MEXICO CHAMBER OF COMMERCE?

Established in 1959, NMCC is the statewide voice of business. We advocate for pro-business policy, connect members to decision makers, and offer programs, events, and insights that help businesses grow and lead.

WHAT ARE THE BENEFITS OF JOINING NMCC?

Influence: Shape state policy through direct engagement with lawmakers and our member driven agenda.

Access: Stay ahead with timely updates, policy alerts, and exclusive analysis on legislative issues.

Collaborate: Connect with a diverse network of employers, leaders, and innovators from across New Mexico.

HOW ARE NMCC'S POLICY POSITIONS DECIDED?


All policy positions are member driven. By joining a policy committee, you help set the agenda and ensure business needs are front and center in every discussion.

IF I ALREADY BELONG TO A LOCAL CHAMBER OR ASSOCIATION, WHY JOIN THE NEW MEXICO CHAMBER?

To join forces with leaders from across New Mexico and address issues that no single community or industry can solve alone. Together, we drive coordinated solutions that strengthen the state's competitiveness and long-term prosperity.

HOW DOES NMCC MAKE A DIFFERENCE FOR NEW MEXICO?

We advocate for smart, practical policies that improve the state's business environment and connect decision makers with the leaders building our economy.



LEARN MORE
Call 505.842.0644
or visit nmchamber.org

READY TO GROW YOUR INFLUENCE AND IMPACT?

Join NMCC Today

Be part of the Chamber that's shaping New Mexico's future. Whether you're ready to lead policy change, expand your network, or stay ahead of key issues, your next step starts here.

Talk to a Membership Expert

LET US HELP YOU FIND THE
RIGHT FIT:

Janae Gardner

O: 505.842.0644

M: 505-604-7055

jgardner@nmchamber.org

Alison Riley

O: 505.842.0644

M: 505.525.8447

ariley@nmchamber.org

Join Online Anytime

It only takes a few minutes to get started.
Become a member today:

[business.nmchamber.org/member/
newmemberapp](https://business.nmchamber.org/member/newmemberapp)

PARTNER INVESTORS



PRINCIPAL INVESTORS



PREMIER INVESTORS



SUPPORTING INVESTORS



ASSOCIATE INVESTORS



AFFILIATE INVESTORS





GET IN TOUCH

505.842.0644

info@nmchamber.org

nmchamber.org

FOLLOW US ON SOCIAL MEDIA



[/NMChamberVoice](https://www.facebook.com/NMChamberVoice)



[/NMChamberVoice](https://twitter.com/NMChamberVoice)



[/new-mexico-chamber-of-commerce](https://www.linkedin.com/company/new-mexico-chamber-of-commerce)



[/nm.chamber](https://www.instagram.com/nm.chamber)